

# Recommended Network Configurations

This section lists the recommended network configurations for an OnApp Cloud installation.

- For Xen/KVM Cloud
- For Xen/KVM Cloud Using OnApp Storage (Integrated Distributed SAN)
- For Baremetal Server Cloud
- For Smart Server Cloud
- For Mixed Smart/Baremetal Server Cloud

**See also:**

[Server Config Reminder](#) - supported versions of the servers

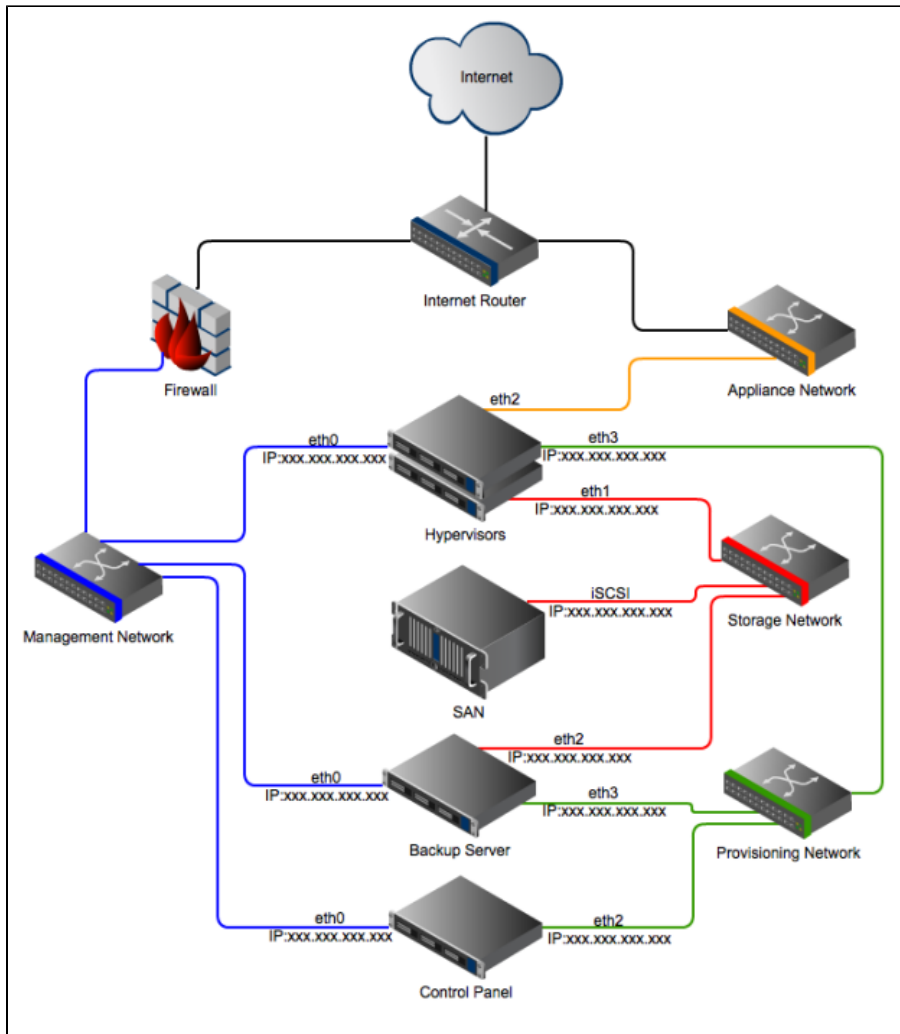
[Supported Functionality](#)

[Software Requirements](#)

[Suggested Specifications](#)

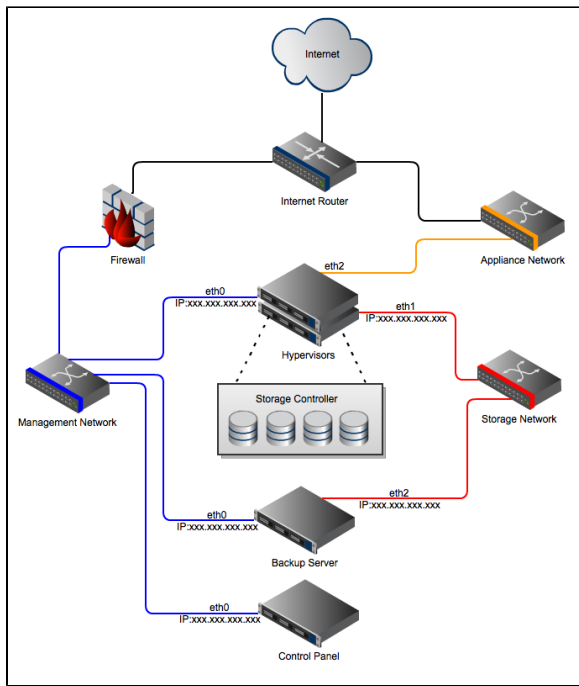
[Types of Cloud Service with OnApp](#)


## For Xen/KVM Cloud



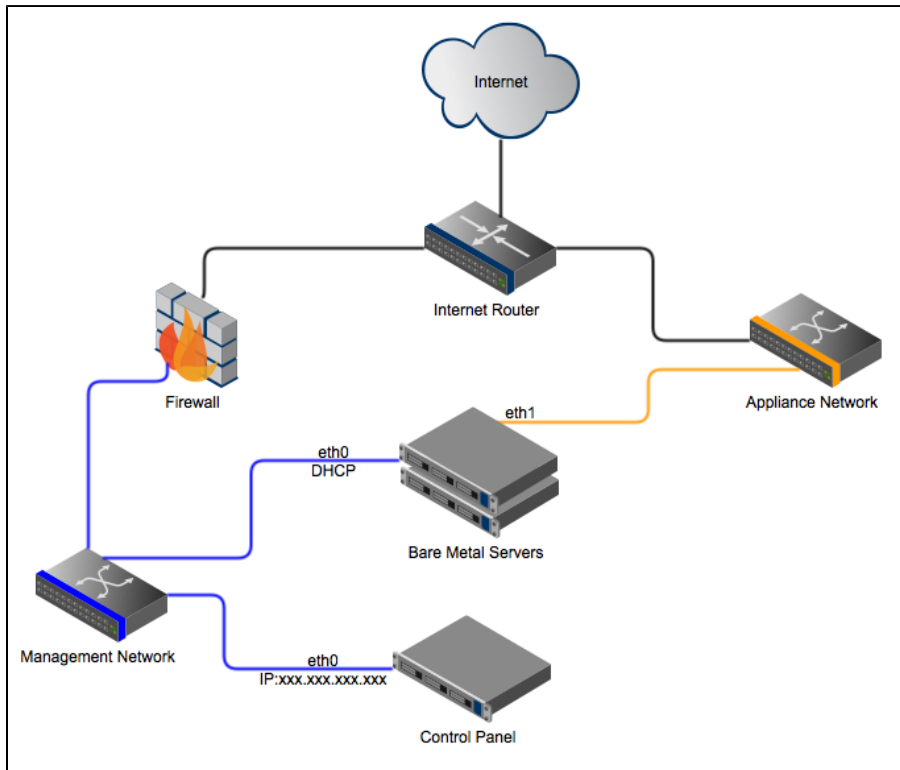
## Xen/KVM Cloud Using OnApp Storage (Integrated Distributed SAN)

Provisioning network is not required for clouds using Integrated Storage with dedicated backup servers.

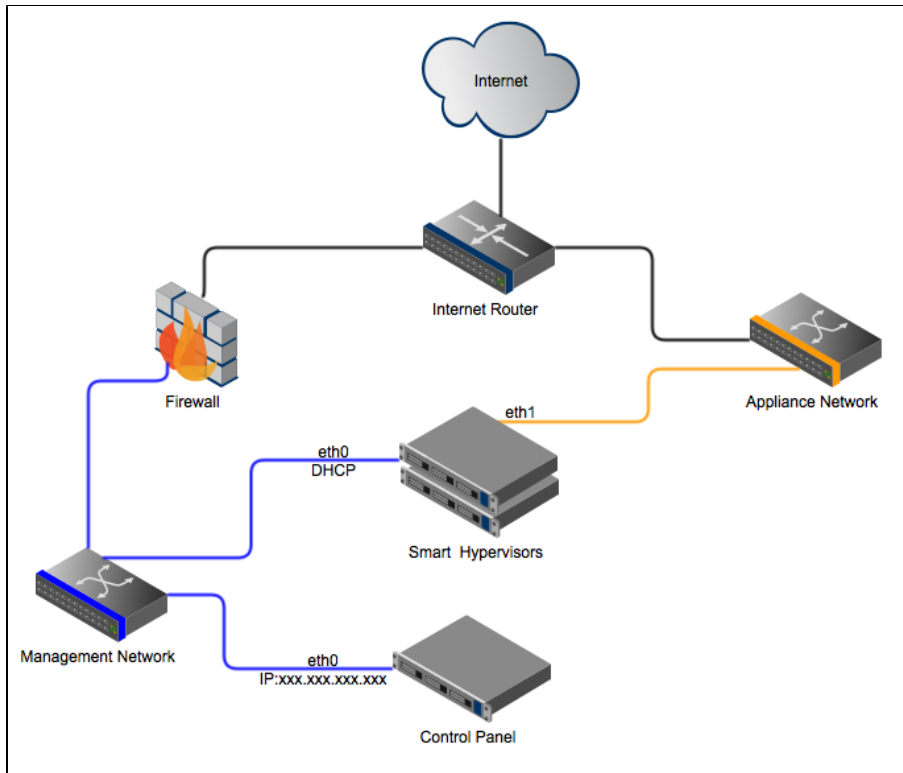


 If you are experiencing MAC address flapping across ports because the switch does not support the balance-rr mode, set up separated VLANs per each bond pair for that switch.

## Baremetal Server Cloud



## Smart Server Cloud



## Mixed Smart/Baremetal Server Cloud

---

